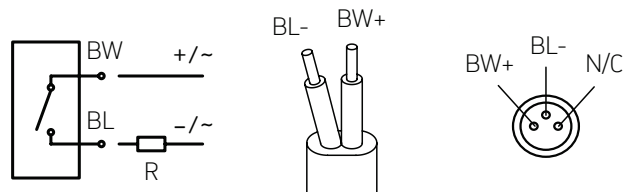
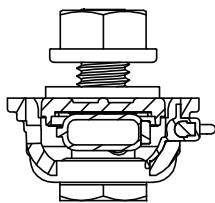


B-B



BW = brown  
 BL = blue  
 N/C = not connected

**ITEMS LIST**

Item	Description
1	Transparent body
2	O-Rings
3	Flanged hex M12
4	Plastic cover
5	NBR seal
6	Magnetic floating element
7	Hollow bolt M12
8	"REED" sensor with M8 male connector

**ELECTRICAL CHARACTERISTICS MIN. LEVEL REED SENSOR SWITCH**

<b>Sensor type</b>	REED 2 wires
<b>Max. applicable voltage</b>	3÷30 Vac/dc
<b>Electrical contacts</b>	NO normally open
<b>Switching current</b>	0,2 AMPS
<b>Power rating (ohmic load)</b>	6 W
<b>Working temperature</b>	-10°C/+70°C (14 F/158 F)
<b>Protection degree</b>	IP67